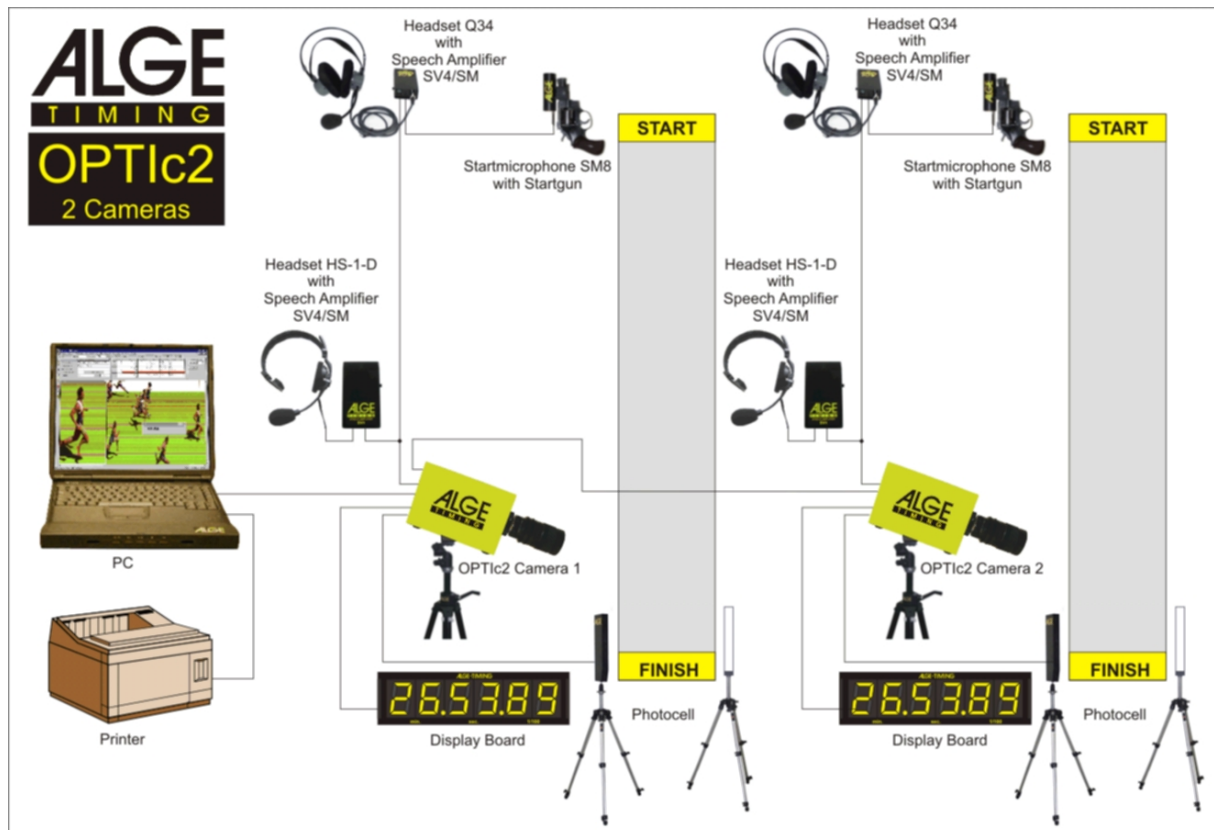
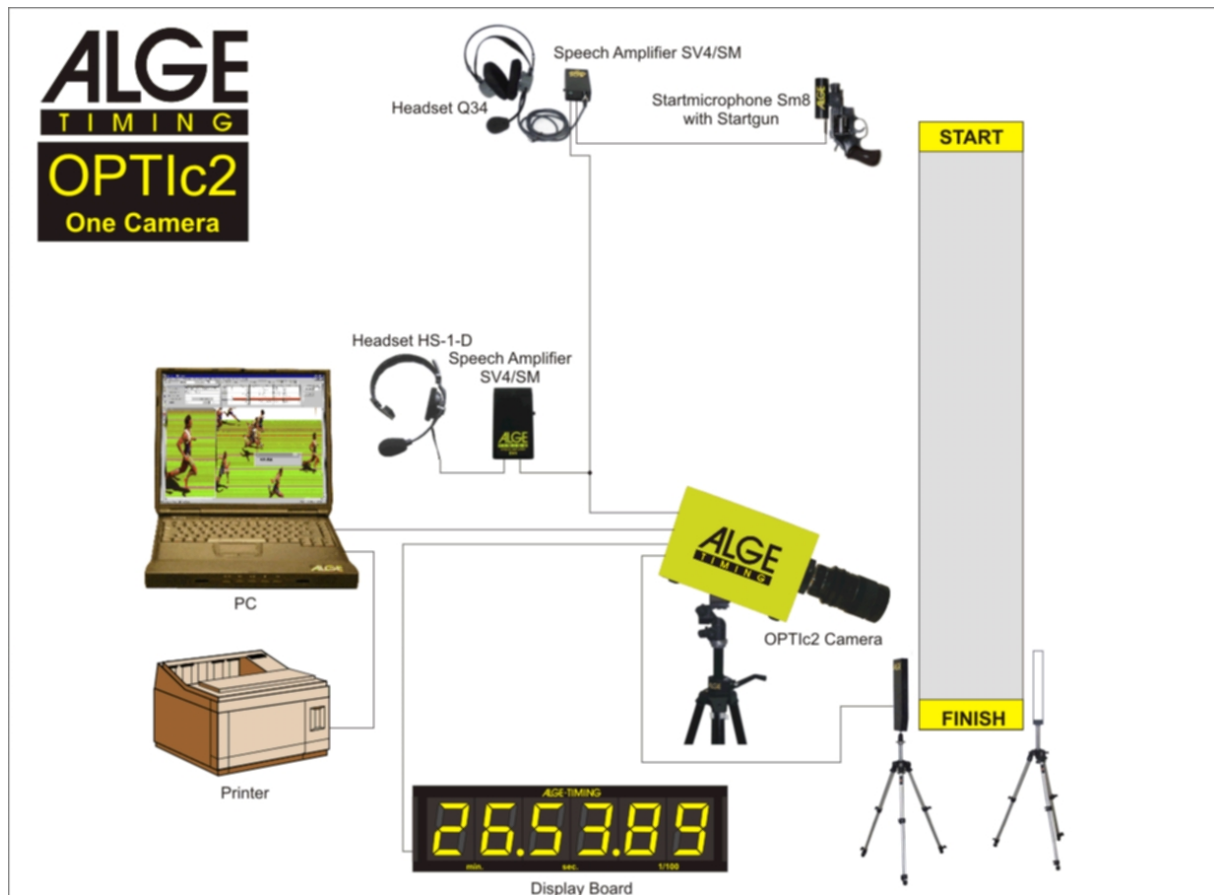
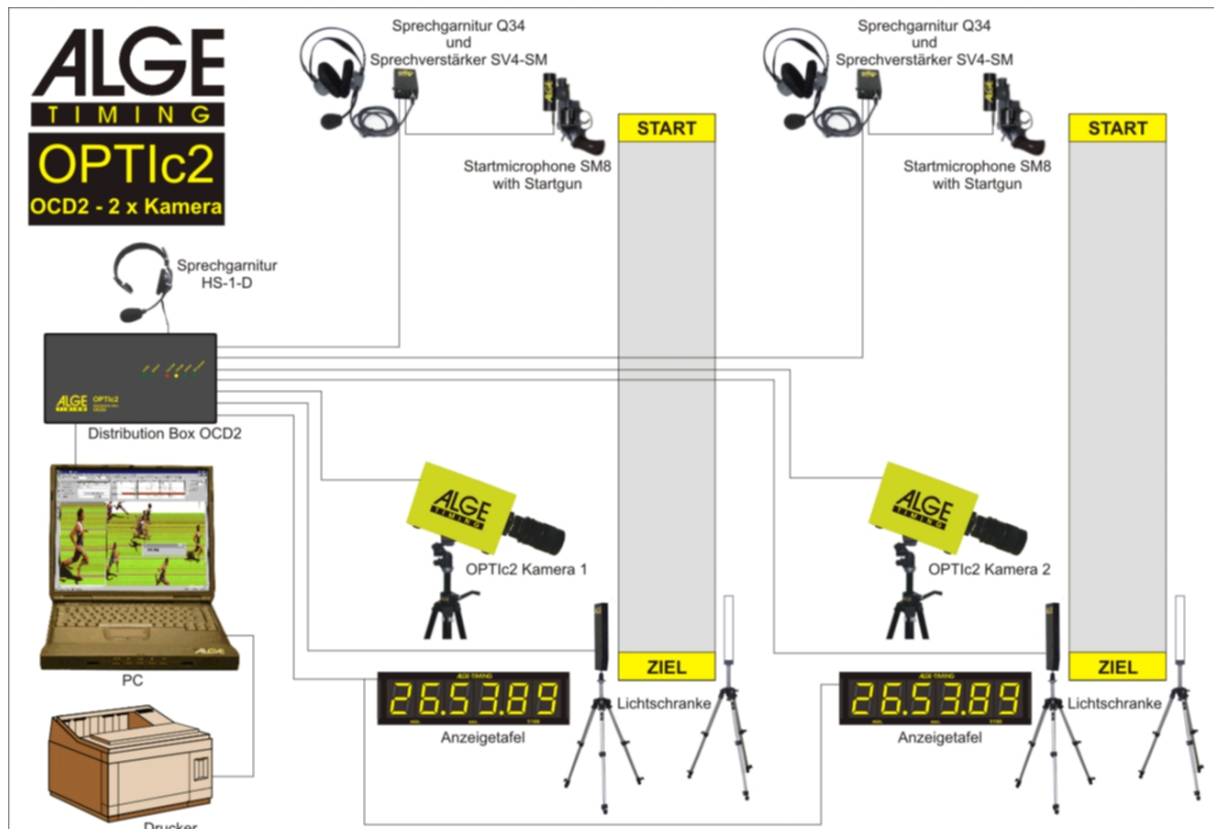
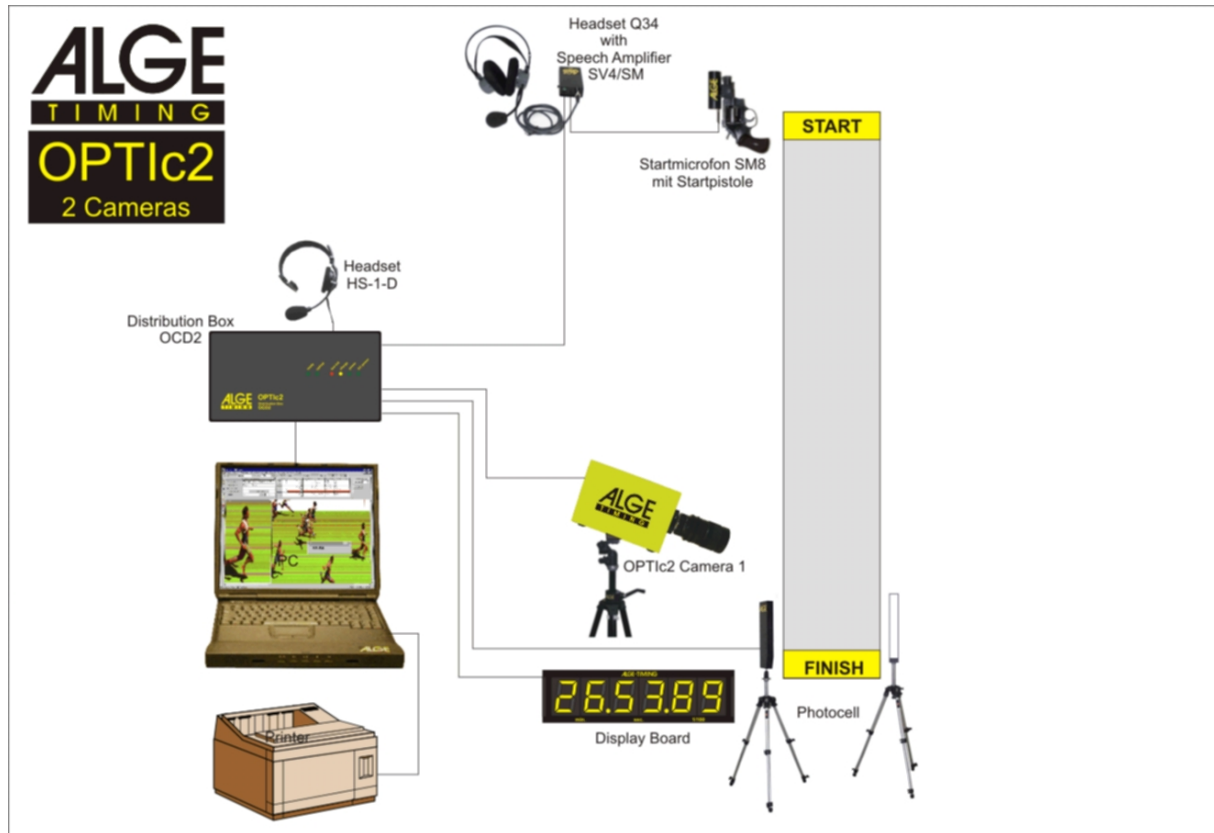


ALGE-TIMING

Photofinish System Setup

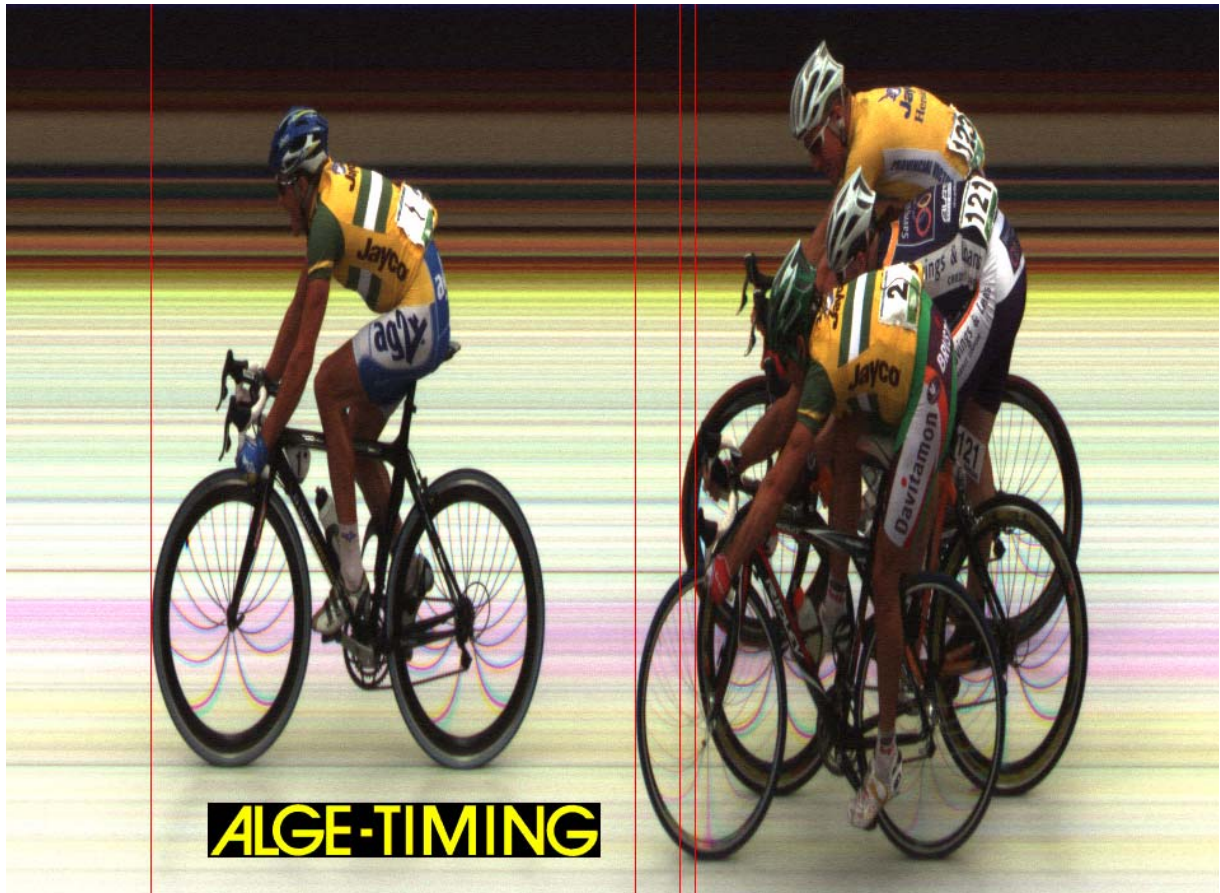


ALGE-TIMING

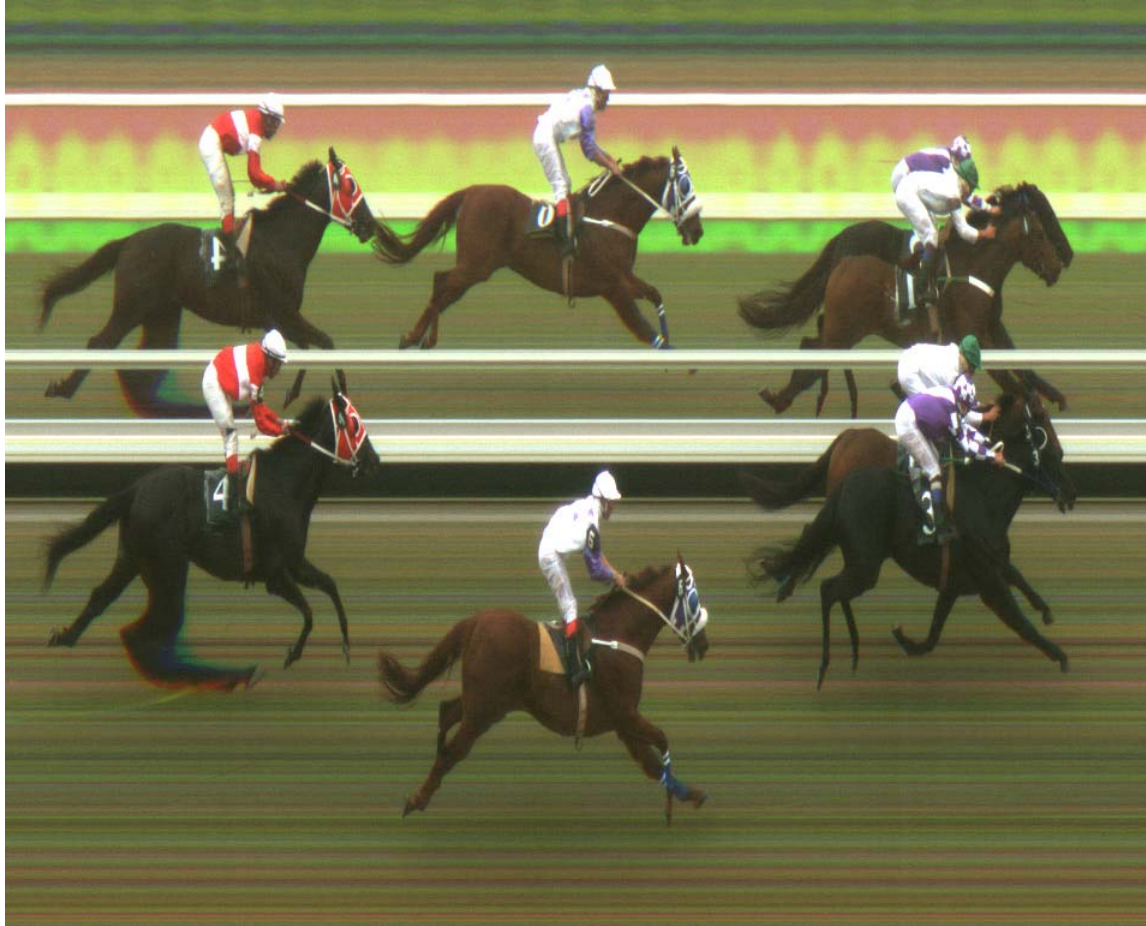


ALGE-TIMING

Pictures of the OPTlc2 and OPTlc2o



ALGE-TIMING



ALGE-TIMING



ALGE-TIMING

Tripod and Gearhead

Tripod TRIMAN:

ALGE-TIMING offers a professional tripod for the photofinish camera (max. height 2.27 m or 89.4 in). A stable tripod is very important to achieve good pictures with a photofinish system.

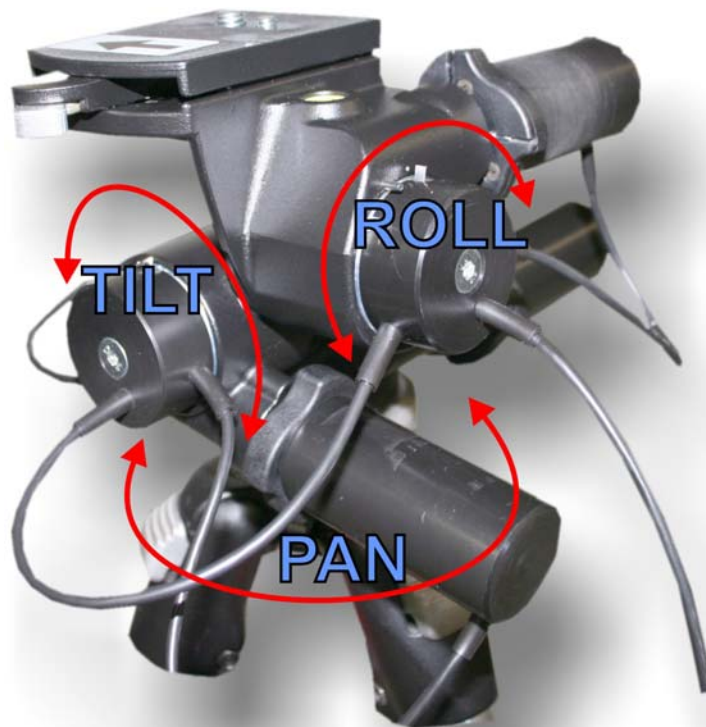
Gearhead 410:

This is a manual gearhead to adjust the camera easily to the finish line. The gearhead allows a 3-dimensional adjustment of the camera.



Electronic Gearhead 410-E:

This is a electrical gearhead to adjust the camera easily to the finish line. The gearhead allows a 3-dimensional adjustment of the camera from the software of the OPTIc2. This gearhead is ideal for a camera that is mounted out of reach of the operator (e.g. on a high tripod, ceiling).



Price net in Euro, exclusive VAT, ex factory, less representative discount!

ALGE-TIMING



PAN – left or right



TILT – up or down



ROLL – level the camera horizontal (see spirit level)